

SMART
SUPERWASH
No. 9




Sandnes
Uldvarefabrik
Norwegian Design

Swedish
Yarn
Imports

DISTRIBUTED IN USA BY:

Swedish Yarn, Inc.
A TRADITION IN FASHION



DISTRIBUTED IN CANADA BY:

Nordic Yarn
IMPORTS LTD.

No. 9 SWEATER JACKET

Photo on page 9.

Sizes:	(M)	L	(XL)
Measurements:			
Full Width:	(121)	130	(140) cm
or approx.	(47½)	51	(55) in.
Full Length:	(64)	67	(67) cm
or approx.	(25¼)	26½	(26½) in.
Sleeve Length:	(47)	48	(49) cm
or approx.	(18½)	19	(19½) in.

Yarn:

Smart (100% new wool, superwash, 50g = 100 m).

Yarn Required:

Ecrú #803 (13) 14 (14) balls
Hunters Green #885 (9) 9 (10) balls

Yarn alternative: Peer Gynt (100% new wool, 50 g = approx. 91 m).

Notions: 5 pewter clasps.

Recommended Needles:

Circular 3 mm [No. 2], 40 cm and 60 cm, circular 4 mm [No. 6], 80 cm, double pointed 3 mm and 4 mm needles.

Tension: 22 stitches in st st on 4 mm needles = 10 cm [4 in.].

Garment information:

The pattern is designed for circular needles to be knit around to the neckline. **Thereafter the armholes are sewn and cut** [see page 1a]. The jacket will be cut down the middle of the front as well.

However, if one wishes to work back and forth from the armholes, the armhole starts when the garment measures (37) 38½ (37) cm [(14½) 15¼ (14½)"].

Back & Front:

With ecru and smaller circular ndls cast on (253) 273 (293) sts. Work back and forth in st st [starting with a p row] for 4 cm [1½"], and on the last right side row inc 14 sts evenly spaced to (267) 287 (307) sts. K 1 row from the wrong side [= folding row] and change to larger ndls.

Work the pattern in st st as follows: Start at the arrow for right front and work (66) 71 (77) sts pattern [to the arrow for correct size], p 1 with ecru, start at the arrow for the back and work (133) 143 (153) sts pattern [= both diagrams from arrow to arrow for correct size], p 1 with ecru, start at the arrow for left front and work (66) 71 (76) sts pattern. Cast on 3 new sts at the end of the row. These 3 sts are mid front and will be used for sewing and cutting later.

Now work around in st st, working pattern A once, then pattern B (1) 1½ (1½) times, thereafter pattern C and remaining diagram with neckline shaping as shown. Cast off.

Sleeves:

With ecru and smaller double pointed ndls, cast on (70) 76 (82) sts. Work st st around for 4 cm [1½"], and at the same time, p the first st on the row the whole time and dec 1 st at each side of this p st every 4 rows 3 times = (64) 70 (76) sts. When the band meas 4 cm [1½"], p 1 row for folding line. Change to larger ndls. Work the sleeve pattern and count out from the middle to find how the pattern starts. Work pattern B (1) 1½ (1½) times as on back & front. **At the same time** inc 1 st at each side of the p st every 1½ cm [½"] the whole time until there are (120) 126 (132) sts on the ndl. Work the new sts into the pattern and change to circular ndl as soon as it can reach. After patterns A, B & C, work pattern D which is repeated until the sleeve meas (45) 46 (47) cm [(17¾) 18 (18½)"]. Work pattern E as on back & front.

Now work as follows: If the garment has been worked back and forth from the armholes, cast off loosely.

If the armholes are to be cut and sewn, work 5 rows in stocking stitch with ecru for facing. Cast off loosely. The facing will hide the machine seams on the wrong side.

Finishing:

Press the garment lightly on the wrong side. Allow 2 - 3 sts at each side for sewing and cutting the armholes. Mark the armholes to match the width of the sleeves, approx. (27) 28½ (30) cm [(10¾) 11¼ (12)"] down each side of the shoulder seams. Follow directions on page 1a for armholes.

Cut and sew in the same manner down the middle of the front.

Graft or sew shoulder seams [see page 24a]. Fold the lower bands inward and fasten on the wrong side.

Hint!

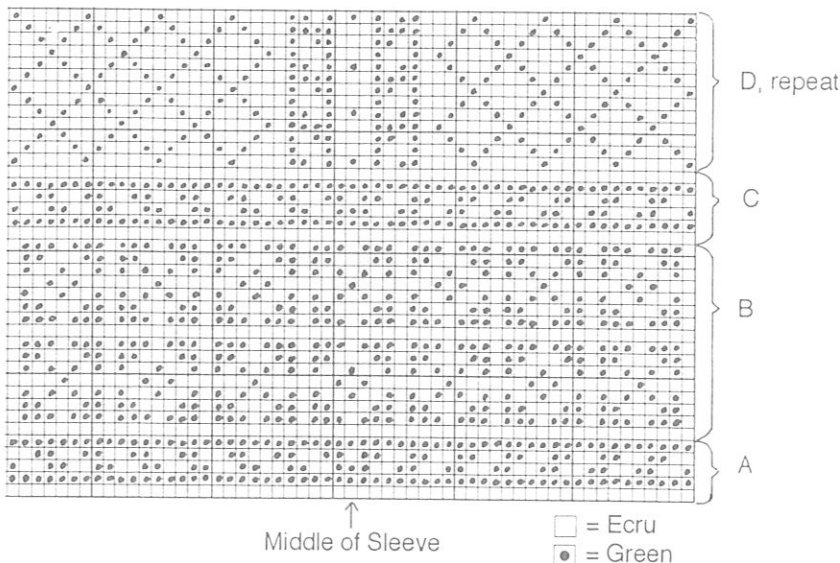
In order to make the Viking ship design easier to follow, make a photo copy of the two pages [enlarge, if possible]. For each row finished, mark it off with a hi-lite marker.

Neckband: Right side facing. With smaller ndls and ecru, pick up and knit approx. 85 sts around the neckline [incl. sts on the holder]. Work back and forth in st st for 5 rows, but on the 3rd row **dec 5 sts** evenly spaced. Thereafter p 1 row [from the right side] and work further 5 rows st st **while inc 5 sts evenly spaced on the 3rd row**. Cast off loosely. Fold the band doubled inward and fasten on the wrong side.

Front Bands: Right side facing. With smaller ndls and ecru pick up and knit approx. 11-12 sts for every 5 cm [2"] along the front's entire edge. Work as the neckband, but without dec and inc. Work the other band in the same manner.

Sew sleeves on and fasten the facing over raw edges on the wrong side. Fold the sleeve bands inward and fasten on the wrong side. Press armholes and bands [use a damp cloth]. Sew clasps on as shown on photo.

Sleeve Pattern

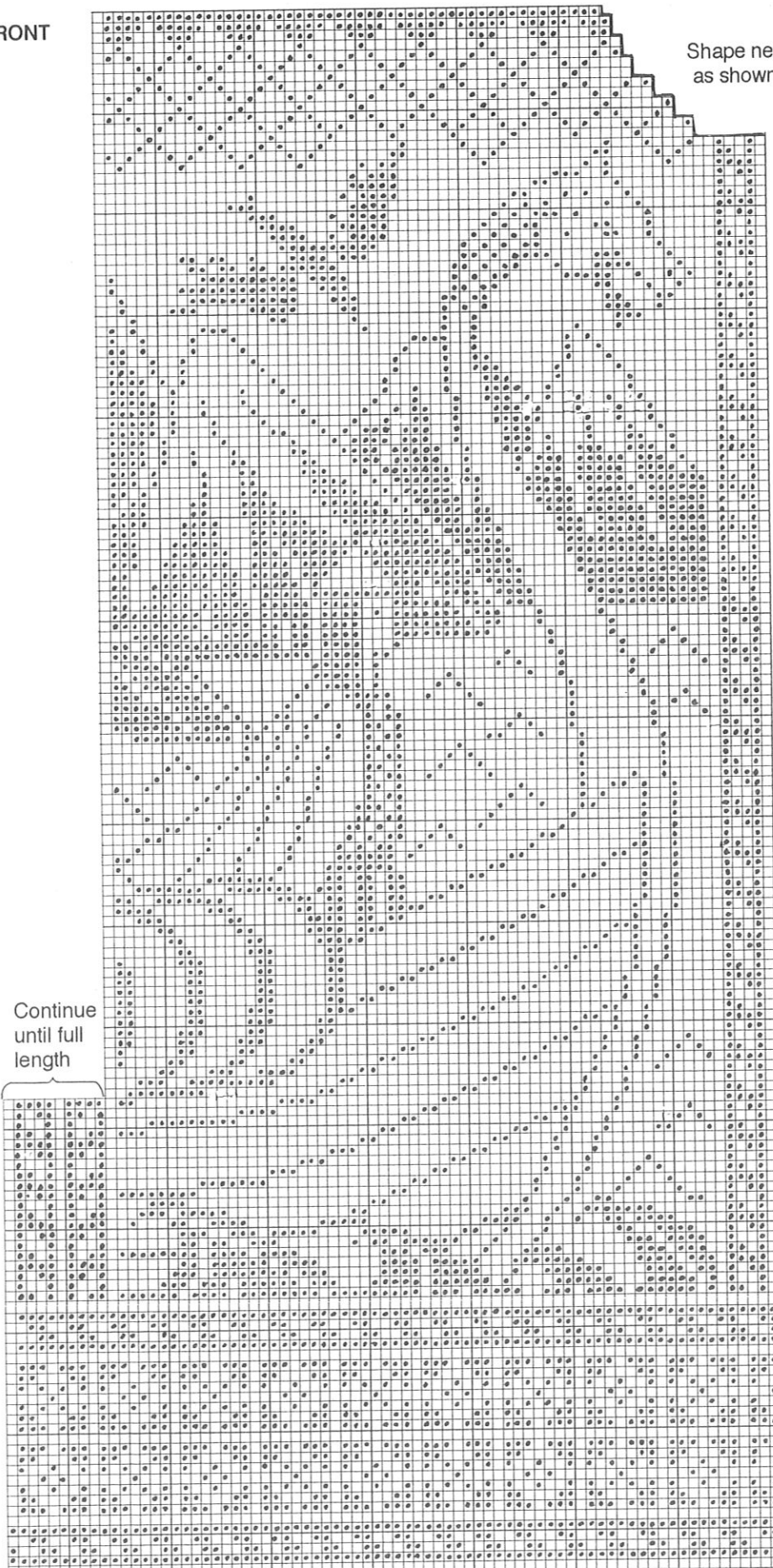


RIGHT FRONT

Shape neckline
as shown

Continue
until full
length

□ = Ecu
● = Green



XL L M

Start here on the right front

Finish here on the right front and on the back

LEFT FRONT

Shape neckline
as shown

E

□ = Ecu
● = Green

Continue
until full
length

C

B

A

Finish here on the left front

M L XL

Start here on the left front and on the back