



No 6

CAT SWEATER

Sweater w/set-in sleeves

Instruction: Olaug Beate Bjelland

Sizes:

(2) 4 (6) 8 (10) yrs

Measurements:

Chest width: (62) 73 (73) 83 (83) cm

Length: (36) 40 (44) 48 (52) cm

Sleeve length: (24) 27 (31) 34 (37) cm, or suitable length

All measurements are for the finished garment = personal body measurements + movement allowance. The measurements are all according to given tension

Yarn:

SISU (80 % wool, 20 % nylon, 50 g = 175 m)

Alternative yarn:

MINI ALPAKKA, MANDARIN PETIT, ALPAKKA SILKE, TYNN MERINOULL, BABYULL LANETT

Note: If alternative yarn is chosen be sure to check the yardage on label. The image of garment might change by using alternative yarn

Yarn required:

Lt.limestone #2319: (3) 3 (4) 4 (5) balls

Yellow sand #2134/Dusty petrol #7212: (2) 2 (2) 3 (3) balls

Pink #4715/Orange #3326 for nose: 1 ball.

Suggested knitting needles:

Circular and double pointed 2.5 mm and 3 mm

Needle sizes are only suggestions. If your knitting shows tighter tension, use thicker needles, for looser tension use thinner needle.

Tension:

27 sts St-st with 3 mm ndls = 10 cm

Back and front:

With Lt.limestone and 2.5 mm circular ndl cast on (168) 196 (196) 224 (224) sts. Join and work (4) 4 (4) 5 (5) cm ribbing k1, p1 in rnds.

Insert marker at sides with (85) 99 (99) 113 (113) sts for front and (83) 97 (97) 111 (111) sts for the back.

Change to 3 mm circular

Work **diagram**, (nose can be embroider with knit sts on finished garment). Twist yarns on WS when floats are more than 5 sts. To ensure

a nice and elastic work do not tighten yarn.

Cont until garment meas approx (31) 34 (38) 41 (45) cm, end with a full pattern repeat and 2 rnds Lt.limestone. Transfer the (15) 15 (17) 19 (21) center front sts to a spare ndl for neck and cont to end of rnd.

Cont **diagram** back and forth, row beg at neck.

Cast off at each side of neck at beg of every row 4 sts once, 3 sts once, 2 sts twice, 1 st twice = 13 sts cast off at each side.

Cont until work meas (36) 40 (44) 48 (52) cm.

Cast off rem sts.

Sleeves:

With Lt.limestone and 2.5 mm double pointed ndls cast on (42) 44 (46) 48 (50) sts. Join and work (4) 4 (4) 5 (5) cm ribbing k1, p1 in rnds. Insert marker on first st of rnd.

Change to 3 mm circular.

Count from center of sleeve to establish beg of pattern and work 2 cm **diagram**. Work marked st in Lt.limestone throughout. This st is not included in pattern.

Cont **diagram**, and at the same time inc 1 st at each side of marker and rep inc every 2,5 cm until (56) 60 (64) 68 (72) sts.

Work new sts in diagram as they arise.

Cont until sleeve meas (24) 27 (31) 34 (37) cm, or suitable length, and end with a full pattern repeat. If more suitable work a few rnds in Lt.limestone until given length.

Turn sleeve inside out and work 5 rows St-st back and forth for facing.

Cast off loosely.

Work other sleeve the same.

Finishing:

Measure top of sleeve and insert marker at each side of garment for depth of armholes. With machine sew 2 seams at each side of center and cut between.

Zigzag cut edges

Sew shoulder seams.

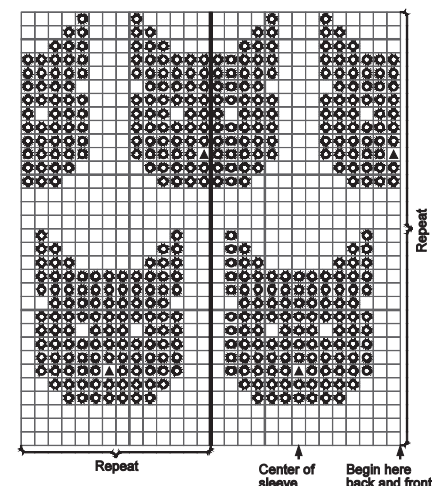
Neckband:

Transfer sts from spare ndl to 2.5 mm circ ndl, and with Lt.limestone knit up sts to approx (104) 108 (112) 118 (122) sts at neck.

Number of sts a multiple of 2. Work (2) 2 (2½) 3 (3) cm ribbing k1, p1 in rnds.

Cast off rib-wise. Sew sleeves on.

Fold facing over cut edge and sew loosely.



- Lt.limestone
- ⊗ Yellow sand/Dusty petrol
- ▲ Pink/Orange

