

# MONTHLY FREE PATTERN





# ASK SWEATER

BOOKLET 1704, NO. 3 / SWEATER W/ROUND YOKE / INSTRUCTION: ANITA BRATHETLAND



## SIZES

(2) 4 (6) 8 (10) 12 yrs

## MEASUREMENTS

Chest width: (63) 67 (72) 76 (80) 86 cm

Length: (34) 38 (42) 46 (48) 50 cm

Sleeve length: (23) 26 (29) 32 (35) 38 cm, or suitable length

All measurements are for the finished garment = personal body measurements + movement allowance. The measurements are all according to given tension

## YARN

ALPAKKA ULL (65 % alpaca, 35 % wool, 50 g = 100 m)

## YARN REQUIRED

Beige melange #2650: (4) 4 (5) 6 (7) 8 balls

Putty #1015: 1 ball all sizes

Grey melange #1042: 1 ball all sizes

## SUGGESTED KNITTING NEEDLES

Circular and double pointed 4.5 mm and 5 mm

Needle sizes are only suggestions. If your knitting shows tighter tension, use thicker needles, for looser tension use thinner needle.

## TENSION

19 sts St-st with 5 mm ndls = 10 cm

## BACK AND FRONT

With beige melange and 4.5 mm circular ndl cast on (120) 128 (136) 144 (152) 164 sts. Join and work (4) 4 (4) 5 (5) 5 cm ribbing k1, p1 in rnds.

Change to 5 mm circular ndl.

Insert marker at each side with (60) 64 (68) 72 (76) 82 sts for each part.

Cont St-st until garment meas (20) 23 (26) 29 (30) 32 cm.

Cast off 8 sts at each side for armholes (= 4 sts at each side of markers).

Put garment aside and work sleeves.

## SLEEVES

With beige melange and 4.5 mm double pointed ndls cast on (34) 36 (38) 40 (42) 44 sts. Join and work (4) 4 (4) 5 (5) 5 cm ribbing k1, p1 in rnds.

Change to 5 mm double pointed ndls.

Insert marker around first and last st on rnd.

Cont St-st and when sleeve meas 6 cm inc 1 st at each side of marker.

Rep inc every (4) 4 (4) 4 (3½) 3½ cm until (44) 46 (50) 54 (58) 62 sts.

Cont until sleeve meas (23) 26 (29) 32 (35) 38 cm, or suitable length.

Cast off 8 middle underarm sts (= marked sts + 3 sts at each side).

Put aside and work the other sleeve the same.

Work [diagram](#), and dec as shown in diagram = (74) 78 (82) 86 (90) 94 sts.

Leave sts on ndl for neckband.

## FINISHING

Sew tog at underarms.

## NECKBAND

Change to 4.5 mm circular ndl and work (10) 10 (12) 12 (14) 14 cm ribbing k1, p1 in rnds

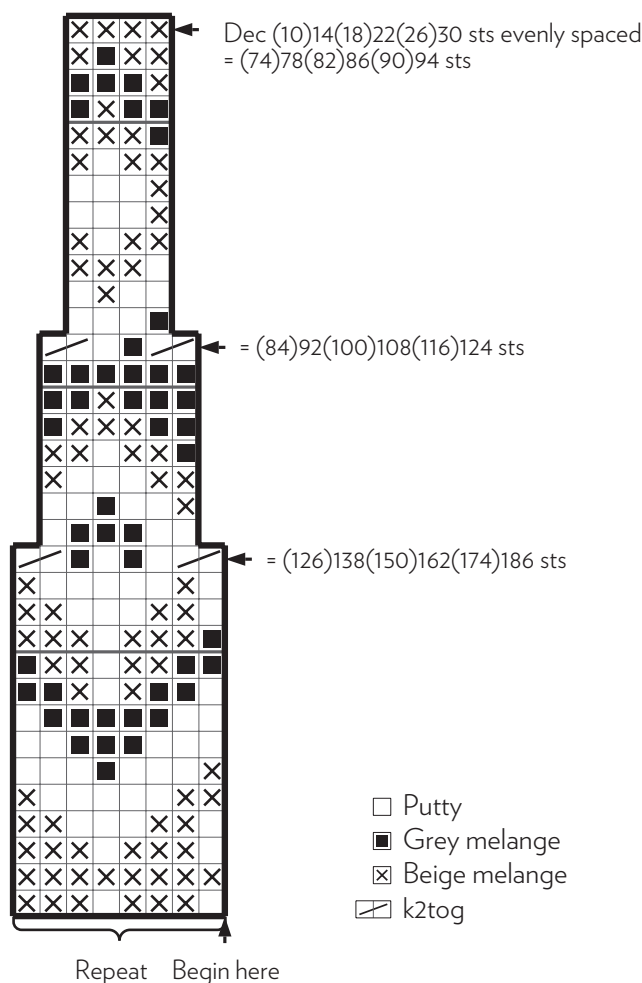
Cast off loosely rib-wise.

## ROUND YOKE

Transfer sleeve sts to the circular 5 mm garment ndl, placing one sleeve above each armhole cast-off = (176) 188 (204) 220 (236) 256 sts.

Beg at a junction on the back.

Work (2) 4 (6) 8 (10) 12 rnds St-st, while dec evenly spaced (8) 4 (4) 4 (4) 8 sts on last rnd = (168) 184 (200) 216 (232) 248 sts.





SADNES  
GARN

