

©RRECTION 2301

NO 9 GALTO SWEATER

RIGHT SIDE FRONT


Knit shoulder sts tog in this manner:


With RS of back facing RS of front, work 1 st from each ndl tog and at the same time cast off.

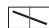
NR 2 KARLI SWEATER

K ON RS, P ON WS

P ON RS, K ON WS

 TRANSFER 2 STS TO SPARE NDL IN FRONT OF WORK,
K2, K STS FROM SPARE NDL

 TRANSFER 2 STS TO SPARE NDL IN BACK OF WORK,
K2, K STS FROM SPARE NDL

 SL 1 ST K-WISE AND TRANSFER ST TBL BACK
TO LEFT NDL, K2TOG TBL

 K2TOG

 INC K1 LEFT

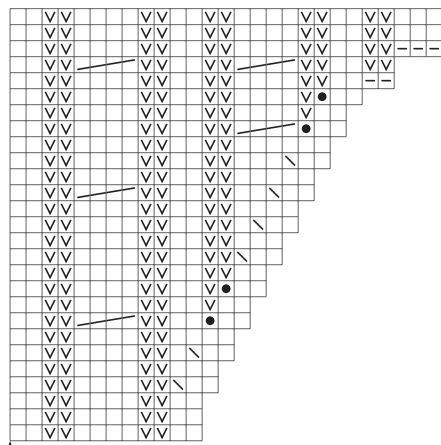
 INC K1 RIGHT

 INC P1 LEFT

 INC P1 RIGHT

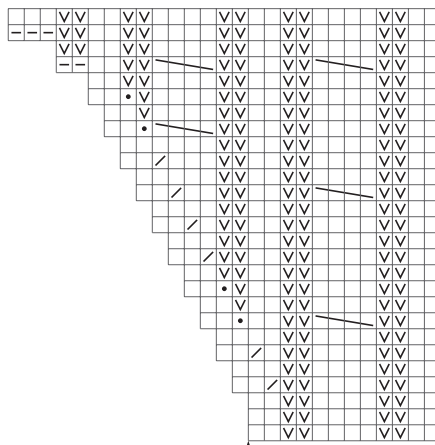
 CAST ON 1 NEW STITCH

B



BEGIN HERE

C



BEGIN HERE