

CECILIE  
SKOG  
TREE CARDIGAN





# TREE CARDIGAN

CARDIGAN W/RAGLAN AND TREE PATTERN  
DESIGN: CECILIE SKOG / INSTRUCTION: ANITA BRATHETLAND

## SIZE

(XS) S (M) L (XL) XXL (XXXL)

## MEASUREMENTS

Bust: (93) 99 (105) 111 (117) 123 (129) cm  
Length: approx (56) 56 (58) 58 (60) 62 (62) cm  
Sleeve length: approx 47 cm, or suitable length  
All measurements are for the finished garment = personal body measurements + movement allowance. The measurements are all according to given tension.

## YARN

MINI ALPAKKA (100 % alpaca, 50 g = 150 m)

## ALTERNATIVE YARN

MANDARIN PETIT, ALPAKKA SILKE, TYNN MERINOULL, BABYULL LANETT, TYNN ALPAKKA ULL, SISU  
Note: If alternative yarn is chosen be sure to check the yardage on label. The image of garment might change by using alternative yarn

## YARN REQUIRED

Main color:  
Lt. grey melange #1032: (8) 9 (10) 11 (12) 13 (14) balls  
Pattern color:  
Olive green #9554/Burnt sand #2734: (1) 1 (2) 2 (2) 2 (2) balls

## NOTIONS

(8) 8 (8) 8 (9) 9 buttons

## SUGGESTED KNITTING NEEDLES

Circular and double pointed 2.5 mm and 3 mm  
Needle sizes are only suggestions. If your knitting shows tighter tension, use thicker needles, for looser tension use thinner needle.

## TENSION

27 sts St-st with 3 mm ndls = 10 cm

## EDGE ST: K EVERY ROW

**TIPS:** For a different look embroider randomly a few trees on cardigan, or change color for some of the trees on yoke. We have embroidered new trees in olive green #9554 and changed color to mustard #2335 for some trees on yoke.

## BACK AND FRONT

With main col and 2.5 mm circular ndl cast on (263) 279 (297) 313 (331) 347 (365) sts, and work 4 cm ribbing back and forth as follows: (First row = WS) 1 edge st, p1, \*k1, p1\*, rep

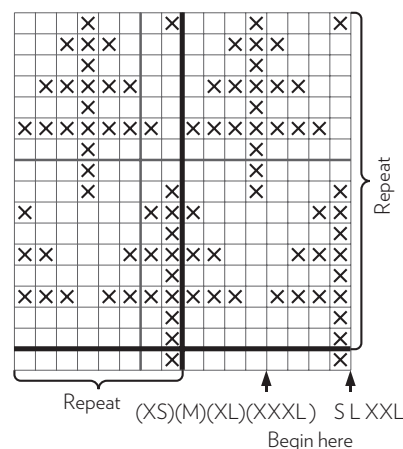
from \*-\* end with 1 edge st.  
Change to 3 mm circular ndl.  
Cast on 5 new sts at end of row (= cutting sts. These sts are not included in pattern or given number of sts).  
Work 1 rnd St-st while dec (22) 22 (24) 24 (26) 26 (28) sts evenly spaced = (241) 257 (273) 289 (305) 321 (337) sts.  
Insert marker on 1 st at each side with (60) 64 (68) 72 (76) 80 (84) sts for each front and (119) 127 (135) 143 (151) 159 (167) sts for the back.  
Cont St-st and when garment meas 35 cm cast off 7 sts at each side for armholes (= marked st + 3 sts at each side).  
Put garment aside and work sleeves.

## SLEEVES

With main col and 2.5 mm double pointed ndls cast on (56) 58 (60) 62 (64) 66 (66) sts.  
Join and work 4 cm ribbing k1, p1 in rnds.  
Change to 3 mm double pointed ndls.  
Insert marker on first st of rnd.  
Cont St-st and when sleeve meas 7 cm inc 1 st at each side of marker.  
Rep inc approx every (2½) 2½ (2) 2 (2) 1½ (1½) cm until (88) 88 (96) 96 (104) 112 (112) sts on rnd.  
Cont until sleeve meas 47 cm, or suitable length.  
Cast off 7 middle underarm sts (= marked st + 3 sts at each side).  
Put aside and work other sleeve the same.

## RAGLAN

Transfer sleeve sts to the circular 3 mm garment ndl, placing one sleeve above each armhole cast-off = (389) 405 (437) 453 (485) 517 (533) sts.  
Work 1 rnd St-st, at the same time k2tog at each junction and insert marker on each of these 4 sts = (385) 401 (433) 449 (481) 513 (529) sts and 4 markers.  
Work 6 rnds diagram, beg at arrow for chosen size.  
Cont diagram and dec for raglan at each marker as follows:  
Work until 1 st before marker, sl 2 k-wise (as working k2tog), k1, pss = 8 sts dec.  
Rep dec on alt rnds (16) 18 (20) 22 (24) 25 (26) times = (257) 257 (273) 273 (289) 313 (321) sts.  
Cast off the (21) 23 (25) 27 (29) 29 (31) middle front sts for neck (included cutting sts).  
Cont St-st and diagram back and forth and cast off for neck at beg of every row at each side 2 sts (0) 1 (2) 3 (4) 7 (9) times, 1 st (15) 14 (13) 12 (11) 8 (6) times at the same time cont dec for raglan where this is possible 15 times more, and until a total of (31) 33 (35) 37



□ Main color  
X Pattern color

(39) 40 (41) times over sts for the back.  
Note: Dec for raglan on RS rows.  
Leave rem sts on ndl for neck.

## FINISHING

With machine sew 2 seams at each side of center front on cutting sts. Cut between. Zigzag cut edges.  
TIPS: Work neckband, front bands and facings before cutting at front.

## NECKBAND

Transfer neck sts to 2.5 mm circular ndl and with main col knit up sts at neck edge. Work 1 row St-st and at the same time adjust number of sts to (127) 131 (135) 141 (143) 147 (151).  
Work 8 cm ribbing back and forth as for back/front.  
Fold neckband to WS and sew with hidden sts.

## LEFT FRONT BAND

With main col and 2.5 mm circular ndl knit up approx 1 st every st/row, but miss every 4th st/row to approx (137) 137 (141) 141 (145) 149 (149) sts.  
Number of sts a multiple of 2+1.  
NOTE: Knit up through both layers on neckband.  
Work 4 cm ribbing back and forth as for back/front.  
Cast off rib-wise.

## RIGHT FRONT BAND

Work as left front band, but with (8) 8 (8) 8 (9) 9 (9) buttonholes evenly spaced after approx 2 cm.  
The lower approx 2 cm from cast on edge,

the upper at middle of neckband.

Buttonhole: k2tog, 1 yo.

#### **FACING**

From WS, with main col and 2.5 mm circular  
ndl knit up 1 st in each st on first row of front  
band. Work 5 rows St-st back and forth.

Cast off.

Fold facing over cut edge and sew with  
hidden sts.

Work other side the same

Sew underarm openings.

Sew buttons on.

