

CHRISTMASGRYNET
SWEATER MEN

SADNES GARN

THE NORWEGIAN
YARN FACTORY
SINCE 1888



CHRISTMASGRYNET SWEATER MEN

#JULEGRYNETHERREGENSER / 2 / OPPSKRIFT: SANDENS GARN
VANSKELIGHETSGRAD ***MIDDELS

SIZE

(S) M (L) XL (2XL-3XL) 4XL

MEASUREMENTS

Chest: (104) 109 (115) 123 (131) 144 cm

Length: (67) 69 (70) 72 (73) 75 cm, or suitable length

Sleeve length: (52) 54 (54) 55 (55) 55 cm, or suitable length

All measurements are for the finished garment = personal body measurements + movement allowance. The measurements are all according to given tension.

THE GARMENT

Work sweater from neck down. Work turning rows with GSR to create and shape a deeper front neckline. Work pattern according to diagram with inc for round yoke, and end with a small pattern border on body and sleeves.

YARN

FRITIDSGARN (100 % Norwegian wool, 50 g = 70 m)

YARN REQUIRED

Dark green #85718260: (10) 11 (12) 13 (14) 15 balls

Natural #1012: (2) 2 (2) 2 (3) 3 balls

Cornflower #6573: 1 ball each size

Dusty light green melange #9041: 1 ball each size

SUGGESTED KNITTING NEEDLES

Circular and double pointed 5 mm and 5.5 mm

Small 4 mm circular for neckband

Needle sizes are only suggestions. If your knitting shows tighter tension, use thicker needles, for looser tension use thinner needle

TENSION

15 sts St-st with 5.5 mm ndls = 10 cm

GSR = GERMAN SHORT ROWS

After each turning always sl first st p-wise with yarn in front of work, lead yarn over right ndl and pull yarn firmly at the back until 2 loops on ndl. The 2 loops count as 1 st. When working rows/rnds with loops work loops tog to 1 st.

YOKE

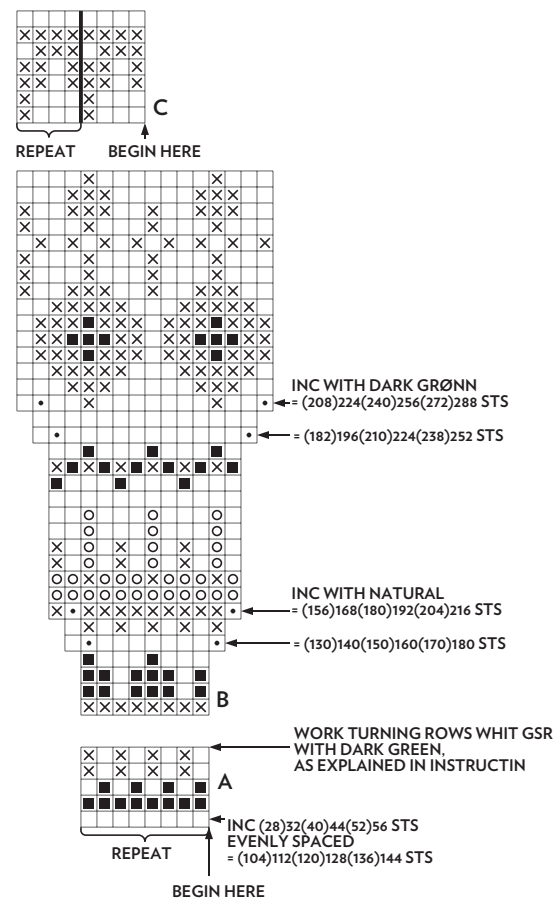
Beg with neckband.

With dark green and small 4 mm circular ndl cast on
(76) 80 (80) 84 (84) 88 sts.

Join and work 6 cm ribbing k2, p2 in rnds.

Insert marker at beg of rnd = middle back.

Change to 5.5 mm circular ndl, work diagram A, and inc as shown in diagram.

☐ DARK GREEN

☒ NATURAL

 CORNFLOWER

 DUSTY LIGHT GREEN MELANGE

◻ INC = PICK UP YARN BEFORE NEXT ST

AND K TBL THIS NEW ST

Beg at middle back marker and with dark green turning rows with GSR by arrow in diagram to shape and create a deeper front neckline as follows:

Knit (9) 10 (11) 12 (13) 14 sts, turn, purl until (9) 10 (11) 12 (13) 14 sts pass middle back marker, turn.

Turn in the same manner, but work 4,6 sts pass previous turning, until a total of 3 turnings on each side.

Work diagram B and inc as shown in diagram = (208) 224 (240) 256 (272) 288 sts.

Cont (1) 2 (3) 4 (5) 6 rnds St-st with dark green and on next rnd divide work for sleeves, back and front as follows:

Work (32) 34 (35) 38 (41) 45 sts (= ½ back), transfer the next (40) 44 (50) 52 (54) 54 sts to spare yarn for sleeves, cast on (14) 14 (16) 16 (16) 18 new underarm sts, work (64) 68 (70) 76 (82) 90 sts (= front), transfer the next (40) 44 (50) 52 (54) 54 sts to spare yarn for sleeve, cast on (14) 14 (16) 16 (16) 18 new underarm sts, work (64) 68 (70) 76 (82) 90 sts = the full back.

BACK AND FRONT

= (156) 164 (172) 184 (196) 216 sts.

Cont St-st until garment meas (57½) 59½ (60½) 62½ (63½) 65 cm, straight down from middle of neckband at back, or 9½ cm before suitable length.

Work diagram C.

Change to 5 mm circular ndl.

Cont with dark green and work 6 cm ribbing k2, p2.

Cast off rib-wise.

SLEEVES

Transfer sleeve sts to 5.5 mm double pointed ndls and with dark green knit up (14) 14 (16) 16 (16) 18 new underarm sts = (54) 58 (66) 68 (70) 72 sts.

Insert marker at middle of underarm sts = beg of rnd.

Tips: Pick up yarn between sleeve sts and on each side of the new underarm sts, and on first rnd work this new st tog with next st to avoid hole in garment.

Work (8) 6 (4½) 4 (5) 4 cm St-st and dec on next rnd as follows:

K1, k2tog, knit until 3 sts before marker, sl 1 k-wise, k1, pssso, k1.

Rep dec every (8) 5½ (4½) 4 (4½) 4 cm until (44) 44 (48) 48 (52) 52 sts rem.

Cont St-st until sleeve meas (41½) 43½ (43½) 44½ (44½) 44½ cm, or 10½ cm before suitable length.

Work diagram C, at the same time dec 8 sts evenly spaced on last rnd = (36) 36 (40) 40 (44) 44 sts.

Change to 5 mm double pointed ndls.

Cont with dark green and work 7 cm ribbing k2, p2 in rnds.

Cast off rib-wise.

Work other sleeve in the same manner.