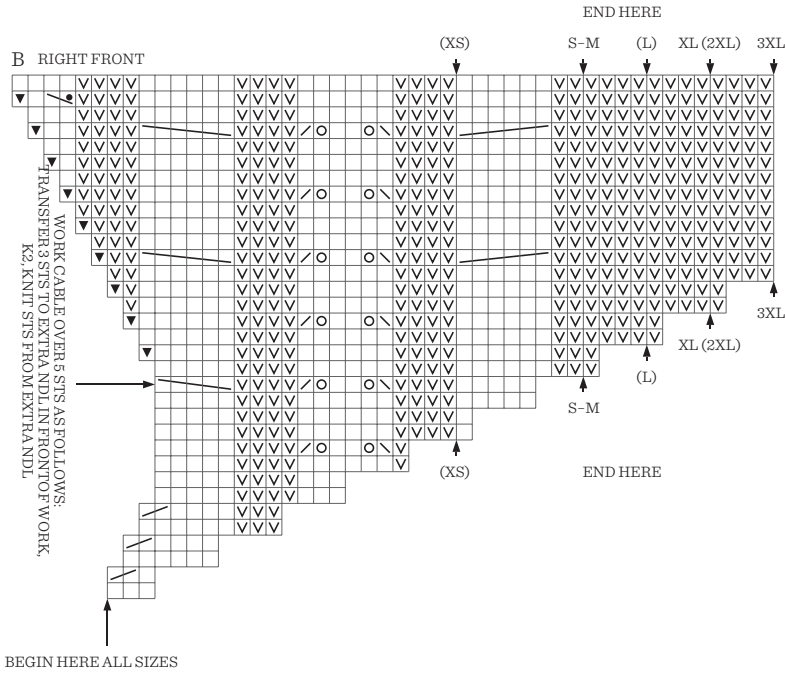


# ©RRECTION 2409

## NR 5 CORNELIA SWEATER

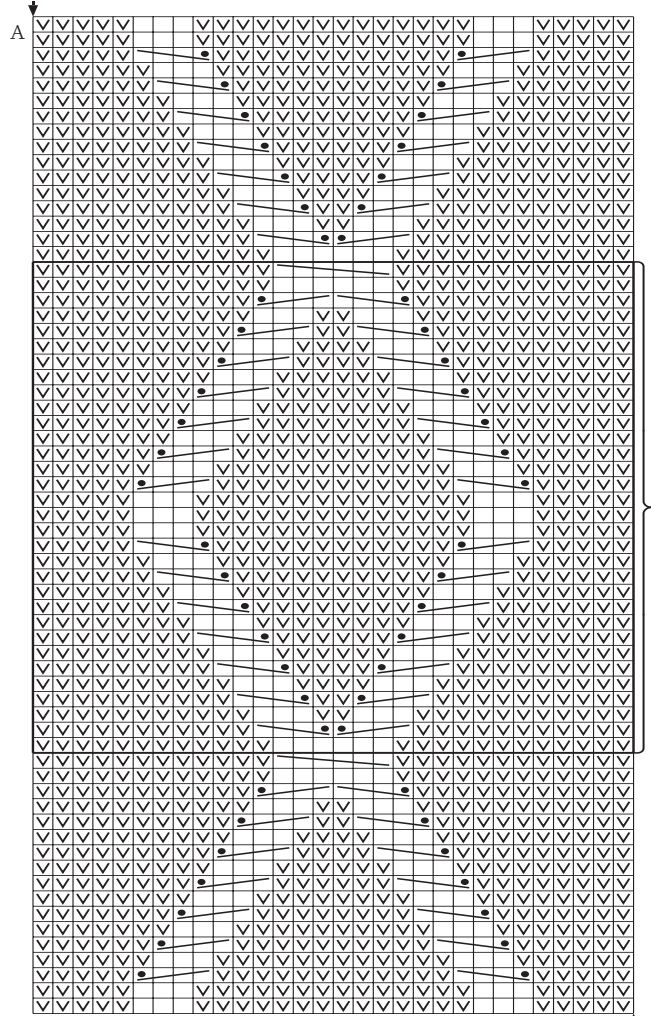


## NR 12 SCARLETT CARDIGAN DIAGRAM EXPLANATION

P ON RS, K ON WS

# NR 13 HEATHER SWEATER CABLE EDITION

HIER ENDEN



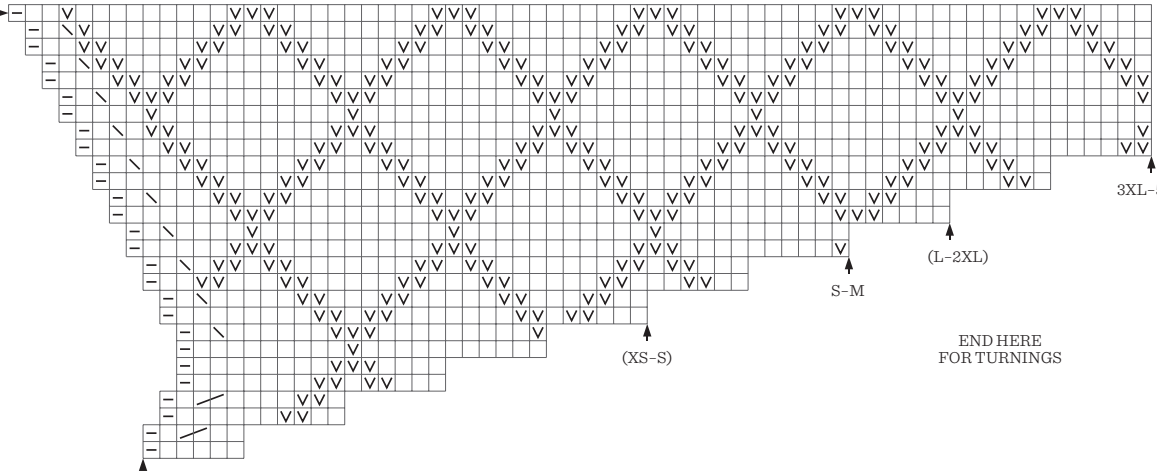
(3)4 (5)6 MAL STR

HIER BEGINNEN

- K ON RS, P ON WS
- P ON RS, K ON WS
- EDGE ST
- SL 1 K-WISE, TRANSFER ST TBL BACK TO LEFT NDL  
AND K2TOG TBL
- K2TOG
- INC LEFT
- INC RIGHT

END HERE  
ALL SIZES

C RIGHT FRONT



BEGIN HERE

END HERE  
FOR TURNINGS