

©RRECTION 2409

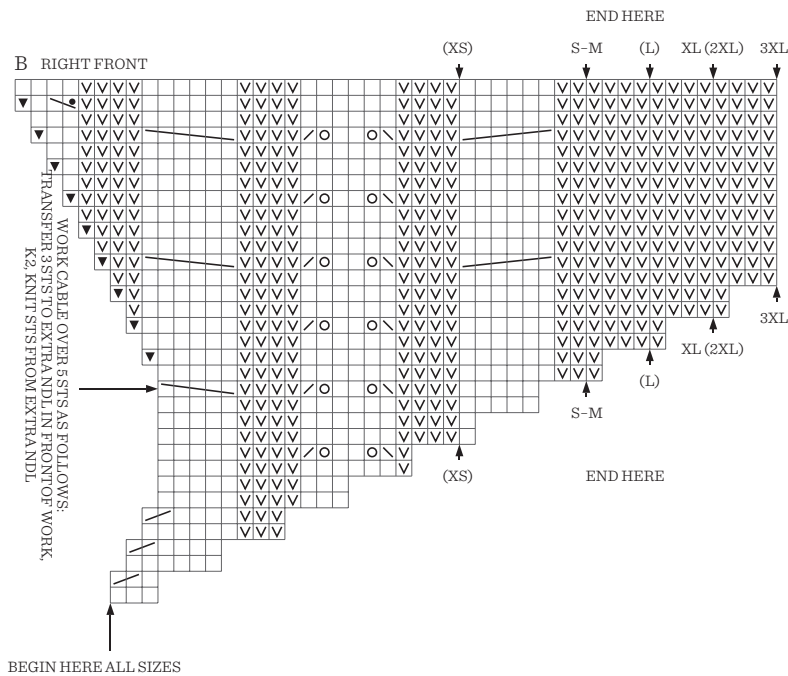
NR 4 LUMEN CARDIGAN

BACK AND FRONT

Work 32 rows rib-pattern back and forth inside 1 edge st on each side.

Change to 3 mm circular ndl, and work next row from WS as follows:

NR 5 CORNELIA SWEATER



☐ K

☒ P

☒ K2TOG TBL

☒ YO

☒ K2TOG

TRANSFER 3 STS TO EXTRA NDL IN FRONT OF WORK,
K3, KNIT STS FROM EXTRA NDL

KNIT 2ND ST K TBL AT BACK OF 1ST ST, KNIT 1ST ST,
LIFT BOTH STS OFF NDL

KNIT 2ND ST, KNIT 1ST ST,
LIFT BOTH STS OFF NDL

TRANSFER 3 STS TO EXTRA NDL IN BACK OF WORK,
K3, KNIT STS FROM EXTRA NDL

☒ P2TOG

☒ WORK K1 AND K1 TBL IN SAME STITCH

NR 8 CORNELIA CARDIGAN

BACK AND FRONT

Change to 4 mm circular ndl and work 8 cm ribbing back and forth as follows:

(First row = WS): Work 1 edge st, k2, *p2, k2*, rep from *-* to end of row, end with 1 edge st.

SLEEVES

Knit 1 rnd, at the same time adjust number of sts to (80) 80 (84) 84 (94) 94.

Cont in rnds according to diagram C as follows:

Work (10) 10 (12) 12 (17) 17 p sts, work 60 sts diagram C, work p to beg of rnd.

Cont in rnds in this order until sleeve meas 36 cm, or until 12 cm before suitable length.

End with at least 3 rnds without cable twisting.

FOR SIZE (XS) S-M (L) XL

Work 1 rnd with dec and inc before ribbing as follows:

Work p1, inc p1, work p until marker, work last rnd of diagram C until marker, work p until 1 st before beg of rnd, inc p1, p1 = (76) 76 (80) 80 sts.

NR 8 CORNELIA CARDIGAN

DIAGRAM EXPLANATION

- ☐ K ON RS, P ON WS
- ☒ P ON RS, K ON WS
- ☒ SL 1 K-WISE, TRANSFER ST TBL BACK TO LEFT NDL AND K2TOG TBL.
- ☒ K2TOG
- ☒ INC LEFT
- ☒ INC RIGHT
- ☒ K2TOG
- ☒ YO
- ☒ K2TOG TBL
- ☒ TRANSFER 3 STS TO EXYTRA NDL IN BACK OF WORK, K3, KNIT STS FROM EXTRA NDL
- ☒ TRANSFER 3 STS TO EXTRA NDL IN FRONT OF WORK, K3, KNIT STS FROM EXTRA NDL
- ☒ CAST ON 1 NEW STITCH
- ☒ P2TOG

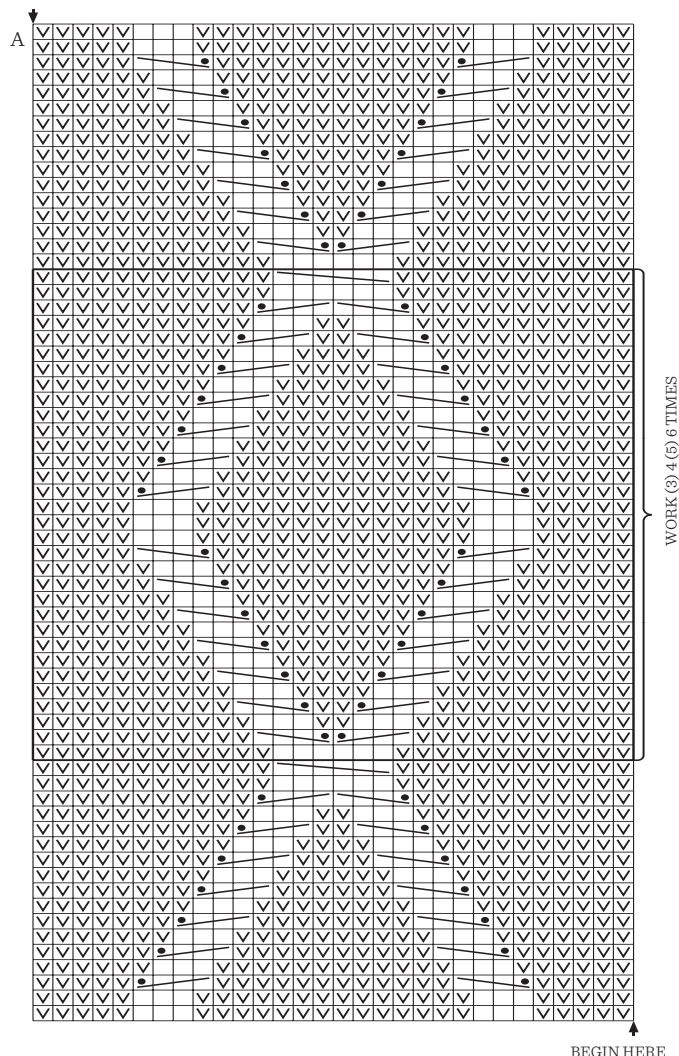
NR 12 SCARLETT CARDIGAN

DIAGRAM EXPLANATION

- ☒ P ON RS, K ON WS

NR 13 HEATHER SWEATER CABLE EDITION

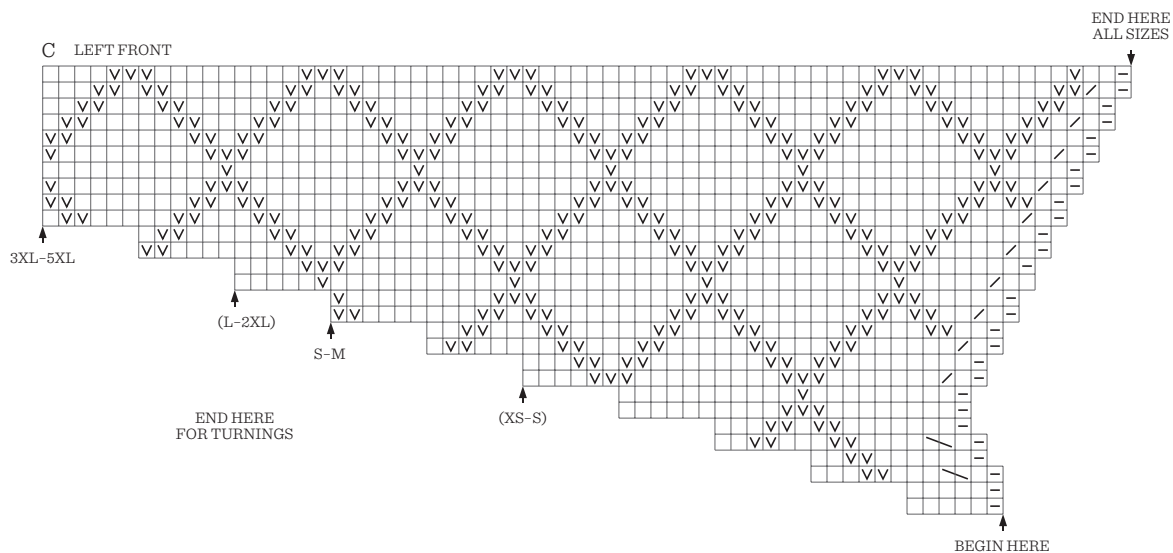
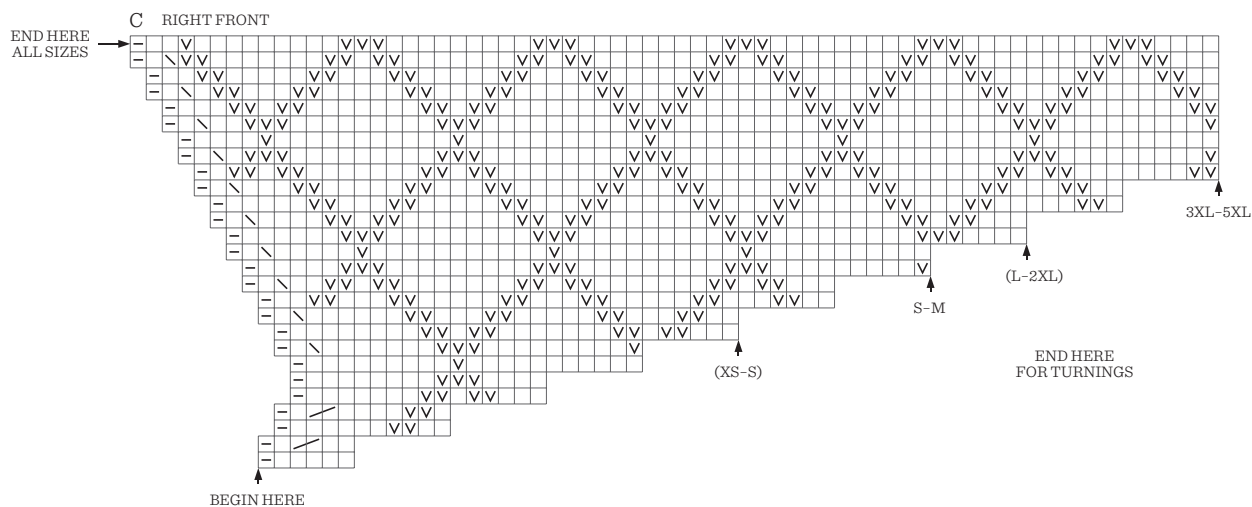
END HERE



BEGIN HERE

WORK (3) 4 (5) 6 TIMES

NR 13 HEATHER SWEATER CABLE EDITION



- ☐ K ON RS, P ON WS
- ☒ P ON RS, K ON WS
- ☐ EDGE ST
- ☒ SL 1 K-WISE, TRANSFER ST TBL BACK TO LEFT NDL
AND K2TOG TBL
- ☒ K2TOG
- ☒ INC LEFT
- ☐ INC RIGHT