



No 3

FAIR ISLE VEST

Vest w/pattern borders

Instruction: Anita Brathetland

Sizes:

(2) 4 (6) 8 (10) 12 yrs

Measurements:

Chest width: (62) 67 (71) 76 (80) 84 cm

Length: (36) 40 (44) 48 (50) 52 cm

All measurements are for the finished garment = personal body measurements + movement allowance. The measurements are all according to given tension.

Yarn:

MINI ALPAKKA (100 % alpaca, 50 g = 150 m)

Alternative yarn:

MANDARIN PETIT, ALPAKKA SILKE, TYNN MERINOULL, BABYULL LANETT, TYNN ALPAKKA ULL, SISU

Note: If alternative yarn is chosen be sure to check the yardage on label. The image of garment might change by using alternative yarn

Yarn required:

Grey melange #1042: (1) 1 (2) 2 (2) 2 balls

Limestone #2320: (1) 1 (2) 2 (2) 2 balls

Charcoal melange #1088: 1 ball all sizes

Burnt sand #2734: 1 ball all sizes

Rust #3355: 1 ball all sizes

Petroleum #7572: 1 ball all sizes

Ochre #2355: 1 ball all sizes

Dk.terracotta #4035: 1 ball all sizes

Suggested knitting needles:

Circular and double pointed 2.5 mm and 3 mm

Needle sizes are only suggestions. If your knitting shows tighter tension, use thicker needles, for looser tension use thinner needle

Tension:

27 sts St-st with 3 mm ndls = 10 cm

Back and front:

With grey melange and 2.5 mm circular ndl cast on (168) 180 (192) 204 (216) 228 sts. Join and work 3 cm ribbing k1, p1 in rnds.

Change to 3 mm circular ndl.

Insert marker around 1 st at each side with (83) 89 (95) 101 (107) 113 sts between markers.

Work **diagram** until garment meas approx (24) 27 (30) 33 (34) 35 cm.

Cast off 7 sts at each side for armholes (= marked st + 3 sts at each side), and work each part separately

K edge st every row.

Work edge sts with both yarns for best result when working pattern back and forth.

Back:

= (77) 83 (89) 95 (101) 107 sts.

Cont **diagram** back and forth, and cast off for armhole at each side as follows: 3 sts (2)3(3)3(3)4 times, 2 sts (3)2(2)3(3)3 times, 1 st (1)2(2)2(2)1 times = (51) 53 (59) 61 (67) 69 sts.

Work **diagram**, inside 1 st at each side until garment meas (36) 40 (44) 48 (50) 52 cm.

Transfer the (33) 35 (37) 39 (41) 43 middle sts to spare ndl for neck.

Cast off rem (9) 9 (11) 11 (13) 13 shoulder sts at each side.

Front:

= (77) 83 (89) 95 (101) 107 sts.

Work and cast off for armhole at each side as at back = (51) 53 (59) 61 (67) 69 sts.

Cont **diagram**, inside 1 edge st at each side, until garment meas (30) 33 (37) 40 (42) 43 cm.

Cast off rem (7) 7 (9) 9 (11) 11 sts and work each side separately.

Right side:

= (22) 23 (25) 26 (28) 29 sts.

Cont **diagram** back and forth inside 1 edge st at each side and dec for v-neck on alt rows: First 3 sts once for size 2 years. Then dec for all sizes as follows: 2 sts (1)2(2)2(2)2 times, 1 st (8)10(10)11(11)12 times = (9) 9 (11) 11 (13) 13 shoulder sts rem.

Cont until garment meas (36) 40 (44) 48 (50) 52 cm.

Cast off.

Left side:

= (22) 23 (25) 26 (28) 29 sts.

Work as right side, but in a mirror image.

Finishing:

Sew shoulder seams at each side.

Armhole bands:

With grey melange and 2.5 mm double pointed nds knit up (82) 86 (90) 94 (98) 102 sts at armhole edge

Number of sts a multiple of 2.

Work 3 cm ribbing k1, p1 in rnds.

Cast off rib-wise.

Neckband:

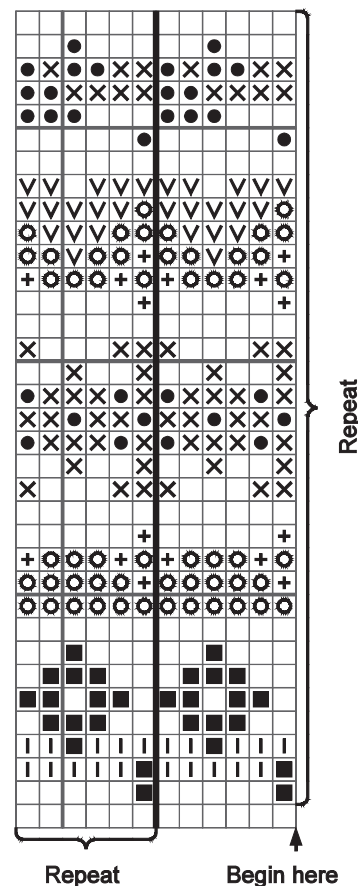
Transfer neck sts to 2.5 mm small circular ndl and with grey melange knit up sts at neck edge.

K 1 rnd and adjust number of sts to (104) 108 (112) 116 (120) 124.

Work 4 cm ribbing k1, p1 in rnds.

Cast off rib-wise.

Fold neckband to WS and sew loosely with hidden sts.



Repeat

Begin here

- Limestone
- Charcoal mélangé
- Grey melange
- Burnt sand
- Rust
- Petroleum
- Ochre
- Dk terracotta

