

CHECKERED SWEATER

SADNES GARN

THE NORWEGIAN
YARN FACTORY
SINCE 1888



CHECKERED SWEATER

SWEATER W/STRUCTURAL PATTERN / INSTRUCTION: LIV STANGELAND



SIZES

(XS) S (M) L (XL) XXL-XXXL

MEASUREMENTS

Bust: (92) 98 (105) 114 (123) 129 cm
Length: approx (56) 56 (58) 59 (61) 62 cm
Sleeve length: 47 cm, or suitable length
All measurements are for the finished garment = personal body measurements + movement allowance. The measurements are all according to given tension.

YARN

SISU (80 % wool, 20 % nylon, 50 g = 175 m)

ALTERNATIVE YARN

MINI ALPAKKA, MANDARIN PETIT, ALPAKKA SILKE, TYNN MERINOULL, BABYULL LANETT

Note: If alternative yarn is chosen be sure to check the yardage on label. The image of garment might change by using alternative yarn

YARN REQUIRED

Deep petrol #7272: (8) 9 (9) 10 (11) 12 balls

SUGGESTED KNITTING NEEDLES

Circular and double pointed 3 mm
Needle sizes are only suggestions. If your knitting shows tighter tension, use thicker needles, for looser tension use thinner needle

TENSION

26 sts pattern with 3 mm ndls = 10 cm

BACK AND FRONT

With 3 mm circular ndl cast on (240) 256 (272) 296 (320) 336 sts. Join and work 5 rnds ribbing k2, p2.

Insert marker around the first 2 sts and one marker around 2 sts at other side with (118) 126 (134) 146 (158) 166 sts between markers. Work diagram until garment meas (38) 36 (36) 36 (37) 37 cm, end with 1st or 3rd rnd in diagram.

Cast off for armholes 12 sts at each side (= 2 marked sts + 5 sts at each side).

Put garment aside and work sleeves.

SLEEVES

With 3 mm double pointed ndls cast on (52) 52 (56) 56 (60) 60 sts. Join and work 5 rnds ribbing k2, p2. Insert marker around the first 2 sts on rnd.

Cont diagram and when sleeve meas 4 cm inc 1 st at each side of marker as follows: pick up yarn between 2 sts and k tbl this new st.

Work new sts in diagram as they appear.

Rep inc every (3½) 2½ (2½) 2 (2) 2 cm until (76) 84 (88) 92 (96) 100 sts.

Cont until sleeve meas 47 cm, or suitable length, end with same rnd in diagram as back/front.

Cast off 12 underarm sts.

Put aside and work other sleeve in the same manner.

RAGLAN

Transfer sleeve sts to the circular 3 mm garment ndl, placing one sleeve above each armhole cast-off = (344) 376 (400) 432 (464) 488 sts.

Rnd beg at right side on the back.

Work 2 rnds diagram.

Insert marker at each junction for raglan dec. Dec for raglan on 2nd or 4th rnd of diagram as follows:

Work k2tog tbl/p2tog tbl before each marker and k2tog/p2tog after each marker = 8 sts dec on rnd.

NOTE: The 2nd st from marker determine to work sts p tog or k tog.

If 2nd st is to be a k stitch, work sts k tbl tog before marker, and k tog after marker.

If 2nd st is to be a p stitch, work sts p tbl tog before marker, and p tog after marker.

Rep dec on alt rnds a total of (20) 24 (27) 30 (32) 35 times = (184) 184 (184) 192 (208) 208 sts.

Transfer the (18) 18 (22) 26 (28) 32 middle front sts for neck to spare ndl. Cont to end of rnd and cut yarn.

Row beg at neck.

Cont diagram back and forth and work raglan dec on RS rows.

Rep raglan dec on alt rows (9) 9 (8) 8 (8) 8 times more, at the same time cast off for neck at beg of every row at each side 3 sts (0)0(0)1(4)4 times, 2 sts (7)7(8)7(4)4 times, 1 st (2)2(0)0(0)0 times

Leave rem sts on ndl for neckband.

FINISHING, NECKBAND

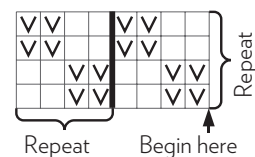
Transfer sts at neck to 3 mm circular ndl, and at the same time knit up sts at neck edge.

Work 6 cm ribbing k2, p2 in rnds, at the same time adjust number of sts on first rnd to (120) 124 (124) 128 (132) 132.

Cast off rib-wise.

Fold neckband and sew loosely with hidden sts on WS.

Sew underarm openings.



- ☐ k on RS, p on WS
- ☒ p on RS, k on WS