



MONTHLY
FREE PATTERN



NORTH

BOOKLET 1910 SMART, NO 1 / SWEATER W/ROUND YOKE / INSTRUCTION: SANDNES GARN

SIZES

(2) 4 (6) 8 (10) 12 yrs

MEASUREMENTS

Chest width: (63) 68 (72) 75 (80) 86 cm
Length: approx (36) 40 (44) 48 (50) 52 cm
Sleeve length: (23) 26 (29) 32 (35) 40 cm, or suitable length
All measurements are for the finished garment = personal body measurements + movement allowance. The measurements are all according to given tension.

YARN

SMART (100 % wool, superwash, 50 g = 100 m)

ALTERNATIVE YARN

PEER GYNT, ALPAKKA, DUO, MANDARIN MEDI, MERINOULL

Note: If alternative yarn is chosen be sure to check the yardage on label. The image of garment might change by using alternative yarn

YARN REQUIRED

Ochre #2527/Dk.blue #6062: (4) 5 (5) 6 (7) 8 balls
Ice blue #6531/Natural #1012: 1 ball all sizes
Natural #1012/Burnt ochre #2544: 1 ball all sizes

SUGGESTED KNITTING NEEDLES

Circular and double pointed 3.5 mm and 4 mm
Needle sizes are only suggestions. If your knitting shows tighter tension, use thicker needles, for looser tension use thinner needle.

TENSION

20 sts St-st with 4 mm ndls = 10 cm

BACK AND FRONT

With ochre/dk.blue and 3.5 mm circular ndl cast on (126) 136 (144) 150 (160) 172 sts. Join and work 4 cm ribbing k1, p1 in rnds. Insert marker at sides with (63) 68 (72) 75 (80) 86 sts for each part. Change to 4 mm circular ndl. Cont St-st until garment meas (22) 26 (29) 32 (33) 35 cm. Cast off 8 sts at each side for armholes (= 4 sts at each side of markers). Put garment aside and work sleeves.

SLEEVES

With ochre/dk.blue and 3.5 mm double pointed ndls cast on (32) 34 (34) 36 (36) 38 sts. Join and work 4 cm ribbing k1, p1 in rnds. Insert marker on first and last st on rnd. Change to 4 mm double pointed ndls. Cont St-st and inc 1 st at each side of marker. Rep inc approx every (3) 3½ (2½) 2½ (2½) 3 cm until (44) 46 (52) 56 (58) 62 sts on ndl. Cont until sleeve meas (23) 26 (29) 32 (35) 40 cm, or suitable length. Cast off 8 middle underarm sts (= marked sts + 3 sts at each side of marker). Put aside and work other sleeve the same.

ROUND YOKE

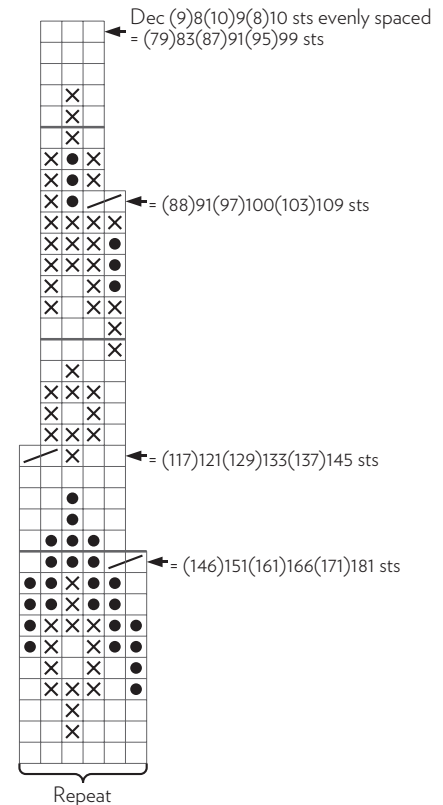
Transfer sleeve sts to the circular 4 mm garment ndl, placing one sleeve above each armhole cast-off = (182) 196 (216) 230 (244) 264 sts. Insert marker at each junction. Rnd beg at a junction on the back. Dec for raglan at each marker as follows: S1, k1, pssso before each marker and k2tog after each marker = 8 sts dec. Rep dec on alt rnds (1) 2 (3) 4 (5) 6 times = (174) 180 (192) 198 (204) 216 sts. Work diagram and dec as shown = (78) 82 (86) 90 (94) 98 sts. Leave sts on ndl for neckband.

FINISHING

Sew underarm openings.

NECKBAND

Transfer sts at neck to 3½ mm circular ndl and with ochre/dk.blue knit up sts at edge. Work 3 cm ribbing k1, p1 in rnds. Cast off rib-wise.



- ☐ Ochre/Dk.blue
- ☒ Natural/Burnt ochre
- ☒ Ice blue/Natural
- ☒ k2tog

