

TOP

SADNES GARN

THE NORWEGIAN
YARN FACTORY
SINCE 1888



TOP

TOP W/SHOULDER TIE-BANDS AND EYELET PATTERN / INSTRUCTION: ÅSA CHRISTIANSEN

SIZES

(2) 4-6 (8) 10 (12) yrs

MEASUREMENTS

Chest width: (67) 74 (81) 89 (96) cm
Length: (30) 34-38 (42) 46 (48) cm, with approx (3) 3-4 (4) 5 (5) cm band for strap
All measurements are for the finished garment = personal body measurements + movement allowance. The measurements are all according to given tension.

YARN

TYNN LINE (53 % cotton, 33 % viscose, 14 % linen, 50 g = 220 m)

YARN REQUIRED

Pastel blue #5930: (1) 2 (3) 3 (4) balls

SUGGESTED KNITTING NEEDLES

Circular 3 mm

Double pointed 2.5 mm

Needle sizes are only suggestions. If your knitting shows tighter tension, use thicker needles, for looser tension use thinner needle

TENSION

27 sts St-st with 3 mm ndls = 10 cm

EDGE ST: K EVERY ROW

BACK AND FRONT

With 3 mm circular ndl cast on (180) 200 (220) 240 (260) sts. Join and work 1 rnd St-st.

Insert marker at sides with (90) 100 (110) 120 (130) sts for each part.

Cont diagram until top meas (21) 25-28 (32) 35 (37) cm.

Cast off 8 sts at each side (= 4 sts at each side of markers), and work each side separately.

BACK

= (82) 92 (102) 112 (122) sts.

Cont diagram back and forth, and dec for raglan on RS rows as follows: 1 edge st, sl 1, k1, pssso, work until 3 sts rem, k2tog, 1 edge st = 2 sts dec.

Rep raglan dec 7 times more = (66) 76 (86) 96 (106) sts.

From RS k2tog over all St-st sections.

From WS cast off k-wise.

FRONT

Work in the same manner as the back.

FINISHING, STRAPS

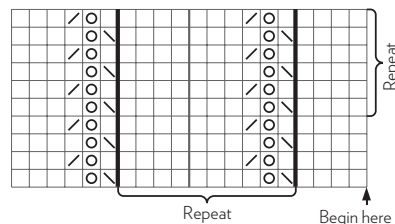
With 2.5 mm double pointed ndls cast on 4 sts and work St-st as follows: k 1 row, slide sts over to other end of ndl, pull yarn firmly and k the 4 sts again. Cont in this manner to work

sts from same side without turning work.

Work 4 straps, each approx (24) 25 (26) 27 (28) 29 cm long.

FINISHING

Sew straps to top (see photo).



- ☐ k on RS, p on WS
- ☒ 1 y o
- ☒ k2tog on RS, p2tog on WS
- ☒ sl 1, k1, pssso

