

LEKEGENSER

# SANDNES GARN

THE NORWEGIAN  
YARN FACTORY  
SINCE 1888





# LONG CROCHETED SKIRT

CROCHETED SKIRT / INSTRUCTION: ANITA BRATHETLAND

## SIZES

(S) M (L) XL (XXL)

## MEASUREMENTS

Waist: (70) 75 (79) 83 (87)

Length: (103) 103 (103) 103 (103) cm

All measurements are for the finished garment = personal body measurements + movement allowance. The measurements are all according to given tension.

## YARN

TYNN LINE (53 % cotton, 33 % viscose, 14 % linen, 50 g = 220 m)

## YARN REQUIRED

Putty #1015: (7) 8 (9) 10 (11) balls

## NOTIONS

6 buttons

## SUGGESTED CROCHET HOOK

3 mm

Size of hook is only suggestion. If your crocheting shows tighter tension, use thicker hook, and if looser tension use thinner hook

## TENSION

24 sc with 3 mm crochet hook = 10 cm

22 dc with 3 mm crochet hook = 10 cm

## PUFF STITCH

\*1 yo, insert hook in stitch and pull up loop\*, rep from \*-\* a total of 3 times, 1 yo, pull yarn through 6 loops, 1 yo, pull yarn through the last 2 loops.

## INC 1 DC

Work 2 dc in same stitch.

## 1ST SC = CH1

## 1ST DC = CH3

## 1ST DTR = CH5

## DIAGRAM B MEAS APPROX 18 CM

## TIPS

For longer or shorter skirt work more or fewer rounds of diagram A.

Measure skirt while hanging since skirt can/ will sag when it is worn.

Beg at waist.

Cast on ch(170) 180 (190) 200 (210).

Work 1 sc in 2nd ch from hook, and in each of all following ch = (169) 179 (189) 199 (209) sc.

Work sc back and forth until skirt meas 5 cm.

Work 6 rows diagram A back and forth.

Inc 1 dc at each side of each flower = 5 dc between flowers.

Work 5 rows and rep inc once more = 7 dc between flowers.

Work ch1 (= 1 stitch inc) and join with 1 sl.

Cont back and forth but join each row with 1 sl. Turn each row with ch3.

Work diagram A until skirt meas approx 40 cm.

Work 1 row dc, at the same time inc (2) 18 (4)

20 (6) dc evenly spaced = (240) 270 (270)

300 (300) tr.

Work 14 rows diagram B.

Work 9 cm diagram A, but with 8 dc between each flower.

Work 14 rows diagram B.

Work 9 cm diagram A, but with 8 dc between each flower.

Work diagram B.

Work 1 row with 1 dc in each dc/ch.

Work picot edging as follows:

ch1, 1 sc in the next 2 dc, \*ch3, 1 sl in first ch, 1

sc in the next 3 dc\*, rep from \*-\* in the rnd,

join with 1 sl.

Cut yarn and fasten well.

## FINISHING

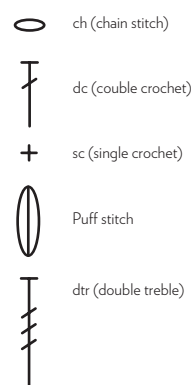
Work 3 rows sc at one side of slit.

Work in the same manner at other side, but with 6 buttonholes evenly spaced on second row.

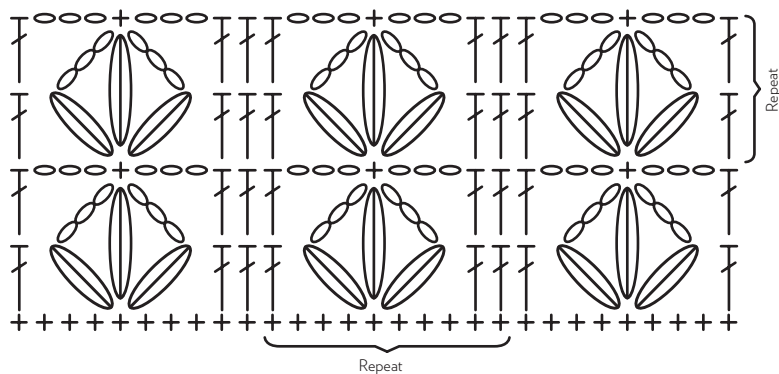
Buttonholes: ch2, miss 2 sc.

Next row: Work 2 sc in ch-loop. Place buttonhole edging over the other side and sew at slit end.

Sew buttons on.



A



B

