



No 11

BUTTERFLY DRESS

Dress worked from neck down
Instruction: Olaug Beate Bjelland

Sizes:

(0-3) 6 (9) 12 mos (2) 4 yrs

Measurements:

Chest width: (44) 49 (49) 53 (56) 59 cm

Hem width: (67) 73 (73) 80 (84) 89 cm

Length: (31) 37 (40) 43 (48) 54 cm, or suitable length

All measurements are for the finished garment = personal body measurements + movement allowance. The measurements are all according to given tension.

Yarn:

ALPAKKA SILKE (70 % baby alpaca, 30 % mulberry silk, 50 g = 200 m)

Alternative yarn:

MINI ALPAKKA, MANDARIN PETIT, TYNN MERINOULL, BABYULL LANETT, SISU

Note: If alternative yarn is chosen be sure to check the yardage on label. The image of garment might change by using alternative yarn

Yarn required:

Putty #1015: (2) 2 (2) 3 (3) 3 balls

Notions:

1 small button

Suggested knitting needles:

Circular and double pointed 2.5 mm and 3 mm

Crochet hook 2.5 mm

Needle sizes are only suggestions. If your knitting shows tighter tension, use thicker needles, for looser tension use thinner needle

Tension:

27 sts St-ts with 3 mm ndls = 10 cm

Inc right: Pick up yarn between 2 sts, transfer st k tbl to left ndl and k new st.

Inc left: Pick up yarn between 2 sts, transfer st to left ndl and work st k tbl.

NOTE: Always k 3 sts between right and left inc in diagram.

Inc 1 st:

Pick up yarn before next st and work this new st k tbl.

INFO: Work dress from neck down. Work a few rows back and forth for slit at middle back, join and cont in rnds with pattern and inc for round yoke.

Edge st: k every row

Yoke:

With 3 mm circular ndl cast on a little loosely (61) 65 (65) 69 (73) 77 sts.

Work 7 rows ribbing back and forth as follows: (First row = WS) 1 edge st, p1, *k1, p1*, rep from *-*, end with 1 edge st.

K 1 row, **while** inc in this manner: *k2, inc 1*, rep from *-*, end with k1 = (91) 97 (97) 103 (109) 115 sts.

Work 6 rows St-st back and forth inside 1 edge st at each side.

Join work and k tog first and last st on rnd = (90) 96 (96) 102 (108) 114 sts.

Rnd beg here = middle back.

Cont **diagram** in rnds and inc as shown in diagram = (180) 192 (192) 204 (216) 228 sts.

Cont St-st until work meas (9) 10 (11) 12 (13) 14 cm, **at the same time** inc (0) 4 (8) 12 (4) 4 sts evenly spaced on last rnd = (180) 196 (200) 216 (220) 232 sts.

Divide work for sleeves, back and front as follows:

Work (25) 28 (28) 31 (32) 34 sts (= ½ back), transfer (40) 42 (44) 46 (46) 48 sts to spare ndl for sleeve, cast on (10) 10 (10) 10 (12) 12 new underarm sts, work (50) 56 (56) 62 (64) 68 sts (= front), transfer (40) 42 (44) 46 (46)

48 sts to spare ndl for sleeve, cast on (10) 10 (10) 10 (12) 12 new underarm sts, work (25) 28 (28) 31 (32) 34 sts (= ½ back).

Skirt:

= (120) 132 (132) 144 (152) 160 sts.

Work St-st until middle underarm of first sleeve and insert marker for side.

Rnd beg here.

Work (1) 1 (1) 1 (2) 2 cm St-st.

Change to 2.5 mm circular ndl and work 7 rnds ribbing k1, p1 in rnds.

Change to 3 mm circular ndl and inc as follows: *k2, inc 1 st*, rep from *-* in the rnd = (180) 198 (198) 216 (228) 240 sts.

Cont until garment meas from highest point of shoulder and straight down (31) 37 (40) 43 (48) 54 cm, with garment placed flat, or until suitable length.

P 1 rnd (= folding rnd), and work 2 cm St-st (= facing). Cast off loosely.

Sleeves:

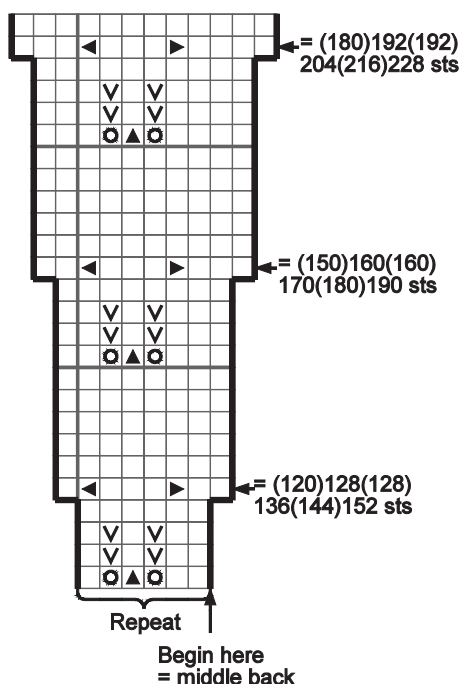
Transfer sleeve sts to 3 mm double pointed ndls, and pick up (10) 10 (10) 10 (12) 12 sts over the new underarm sts = (50) 52 (54) 56 (58) 60 sts.

Work (2) 2 (2) 2 (4) 4 rnds St-st.

Change to 2.5 mm double pointed ndls and work 6 rnds ribbing k1, p1.

Cast off loosely rib-wise.

Work other sleeve in the same manner.



Finishing:**I-cord edging at slit:**

Beg on right side at top of slit with RS facing.

With 2,5 mm ndl cast on 3 sts, cont to knit up 1 st in each st/row, but miss every 4th st/row on right slit edge and cont up at left slit side.

Cut yarn, beg again at right side with RS facing and work i-cord edging as follows:

K2 and k2tbl tog. *Transfer 3 sts back to left ndl, k2, sl 1 k-wise, k1, psso*, rep from *-* until 3 sts rem, k2tog and k1. Transfer 2 sts to left ndl and work k2tog the last 2 sts.

Do not cut yarn, but with crochet hook ch5 for button loop, and fasten loop approx. 2 sts down.

Sew button on.

Fold facing at hem and sew nicely from WS with hidden sts.

