



No 16

HOODED TOWEL

Towel w/hood in rib pattern
Instruction: Anita Brathetland

Size:
70 x 100 cm

Yarn:
MANDARIN PETIT (100 % cotton,
50 g = 180 m)

Yarn required:
Almond white #3011: 8 balls
Golden brown #2534: 1 ball

Suggested knitting needles:
Circular 3 mm
Crochet hook 2.5 mm
Needle sizes are only suggestions. If your
knitting shows tighter tension, use thicker
needles, for looser tension use thinner needle

Tension:
22 sts diagram with 3 mm ndls = 10
cm

Rib-stitch (rib-st):
k1 in st on previous row

Edge st:
First st: sl p-wise with yarn in front of
work and hold yarn firmly.
Last st: k

Towel:
With almond white and 3 mm circular
ndl cast on 155 sts and k 1 row from
WS.
Work **diagram**, inside 1 edge st at
each side until work meas approx.
100 cm, end with a full diagram.
Cast off pattern-wise.

Finishing:
Beg at one corner.
With golden brown and 2.5 mm
crochet hook work 1 sc in each st at
cast-on and cast-off row, and in each
edge st at sides.
NOTE: Work 3 sc in one st at each
corner.

Hood:
Insert marker at both sides of the 85
middle sts on one side lengthwise.

With almond white and 3 mm circular
ndl knit up 85 sts and k 1 row from
WS.

Work **diagram**, inside 1 edge st at
each side until hood meas approx 14
cm, end with a full diagram.

Insert marker around middle pattern st
on row.

Cont **diagram** and dec as follows:

*Work until 1 st rem before marker, sl
2 sts k-wise (as working k2tog), k1,
psso = 2 sts dec.

Work 3 rows **diagram**.

Next row:

Work until 2 sts rem before marker, sl
3 sts k-wise (as working k3tog), k2tog,
psso = 4 sts dec.

Work 3 rows **diagram**.

Next row:

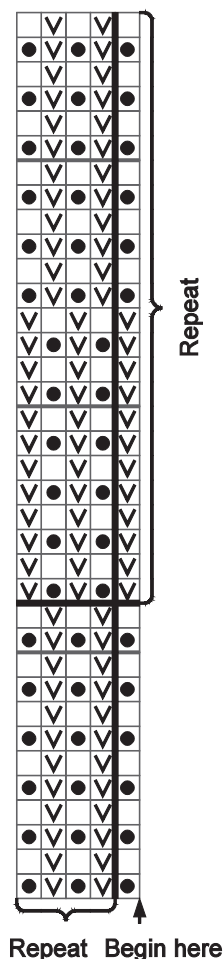
Work until 2 sts rem before marker, sl
3 sts k-wise (as working k3tog), k2tog,
psso = 4 sts dec.

Work 3 rows **diagram***, rep from *-*
once more = 65 sts.

Work 1 row **diagram** and cast off
marked st.

Distribute sts equally on 2 ndls, fold
work with RS facing, and k 1 st from
each ndl tog **and at the same time**
cast off

With golden brown and 2.5 mm
crochet hook work 1 row sc at edges
of towel.



□ k on RS, p on WS
✓ p on RS, k on WS
● rib-st

No 16

CLOTH

*Cloth in rib pattern**Instruction: Anita Brathetland***Size:**

25 x 25 cm

Yarn:MANDARIN PETIT (100 % cotton,
50 g = 180 m)**Yarn required:**

Almond white #3011: 1 ball

Natural #1012/Golden brown #2534: 1
ball**Suggested knitting needles:**

Circular 3 mm

Crochet hook 2.5 mm

Needle sizes are only suggestions. If your
knitting shows tighter tension, use thicker
needles, for looser tension use thinner needle**Tension:**22 sts diagram with 3 mm ndls = 10
cm**Rib-stitch (rib-st):**

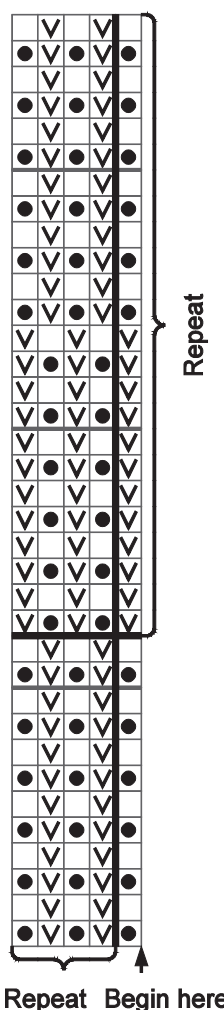
k1 in st on previous row

Edge st:First st: sl p-wise with yarn in front of
work and hold yarn firmly.

Last st: k

With almond white and 3 mm circular
ndl cast on 55 sts and k 1 row from
WS.Cont **diagram**, inside 1 edge st at
each side until work meas approx 25
cm, end with a full diagram.

Cast off pattern-wise.

Finishing:With natural/golden brown/almond
white and 2.5 mm crochet hook, beg
at one corner. Work 1 sc in each st at
cast-on and cast-off row, and in each
edge st at sides.**NOTE:** Work 3 sc in one st at each
corner.

- k on RS, p on WS
- ▽ p on RS, k on WS
- rib-st

